



# AJINOMOTO ENGINEERING 2001 (THAILAND) CO., LTD.

**Based on Our Know-How and Technology,  
Which We Cultivated in Long Engineering Experience in Japan,  
Our Services Will Result Top Performance  
in Thailand, Vietnam and other ASEAN Region**

## ■ Our Services

General engineering services for plant construction, including equipment, building, electricity, utilities and waste water treatment

### Plan and design

Understanding customer's needs and creating optimum design

- Give a concrete shape to customer's needs, of the same quality in ASEAN region as in Japan
- Design for quality, efficiency, usability, cleaning efficiency, zone management, maintenance,
- Meet the requirements for legal, budget control, schedule control

### Fabrication and construction

Quality, safety and schedule management of Japanese style

- Select experienced local subcontractors
- Manage the project in accordance with AJEC's standard and know-how
- Prevent accident in cooperation with all involved parties
- Accommodate the needs for design and fabrication of sanitary equipment, application support for BOI privilege, and clean zone design for food GMP

## ■ Service configurations

Consulting contract, Lump sum contract and CM (Construction Management) contract

- AJEC (Thailand) celebrated its 20<sup>th</sup> anniversary in 2012.

## ■ Service Category

Manufacturing plant and logistic facilities, etc. for food, medical and chemical manufacturing such as plant for frozen food, fish paste, prepared food, seasoning, beverage, etc.

- AJEC is the pioneer in "Central Kitchen System" design.

## ■ Corporate Profile

Corporate Name	AJINOMOTO ENGINEERING 2001 (THAILAND) CO., LTD.
Head Office	7 <sup>th</sup> Floor, Si Ayutthaya Bldg., 487/1 Si Ayutthaya Road Thanon Phayathai, Khet Ratchathewi Bangkok 10400 Thailand
Foundation	1992
Capital	THB 20 million
Sales	THB 2,345 million (FY 2012)
Employees	64 (As of April 2013) Include dispatched Japanese: 5 in Thailand, 1 in Vietnam
Representative	Naohiro Kadota, President and Representative Director
Main Banks	Mizuho Corporate Bank, Ltd., Bangkok Branch Bank of Tokyo-Mitsubishi UFJ, Ltd., Bangkok Branch
Shareholders	Ajinomoto Engineering Corporation (44%) Others (56%) Include: Ajinomoto Co., (Thailand) Ltd. Ajinomoto Sales (Thailand) Co., Ltd.
Contact	Phone: +66-2-248-7221 Fax: +66-2-248-7223 E-mail: naohiro_kadota@ajinomoto.com (Mr. Kadota)

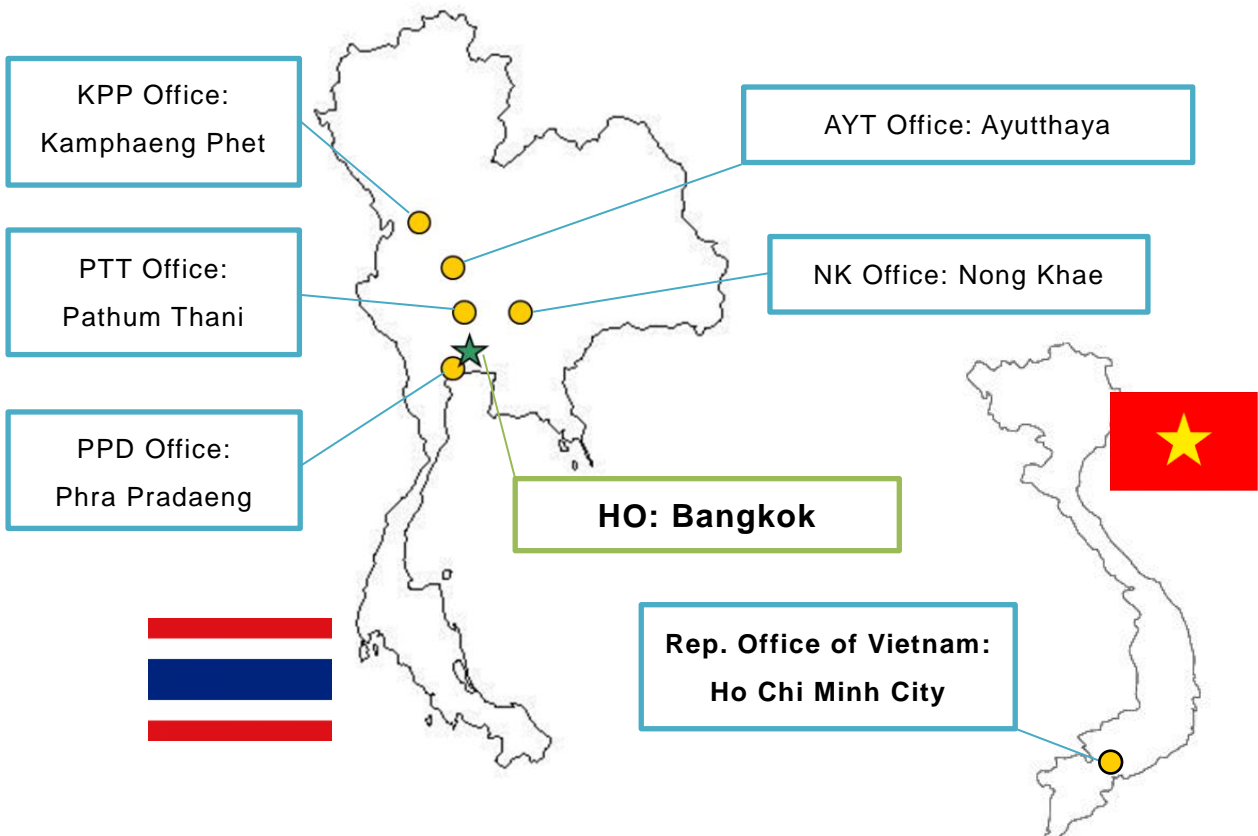
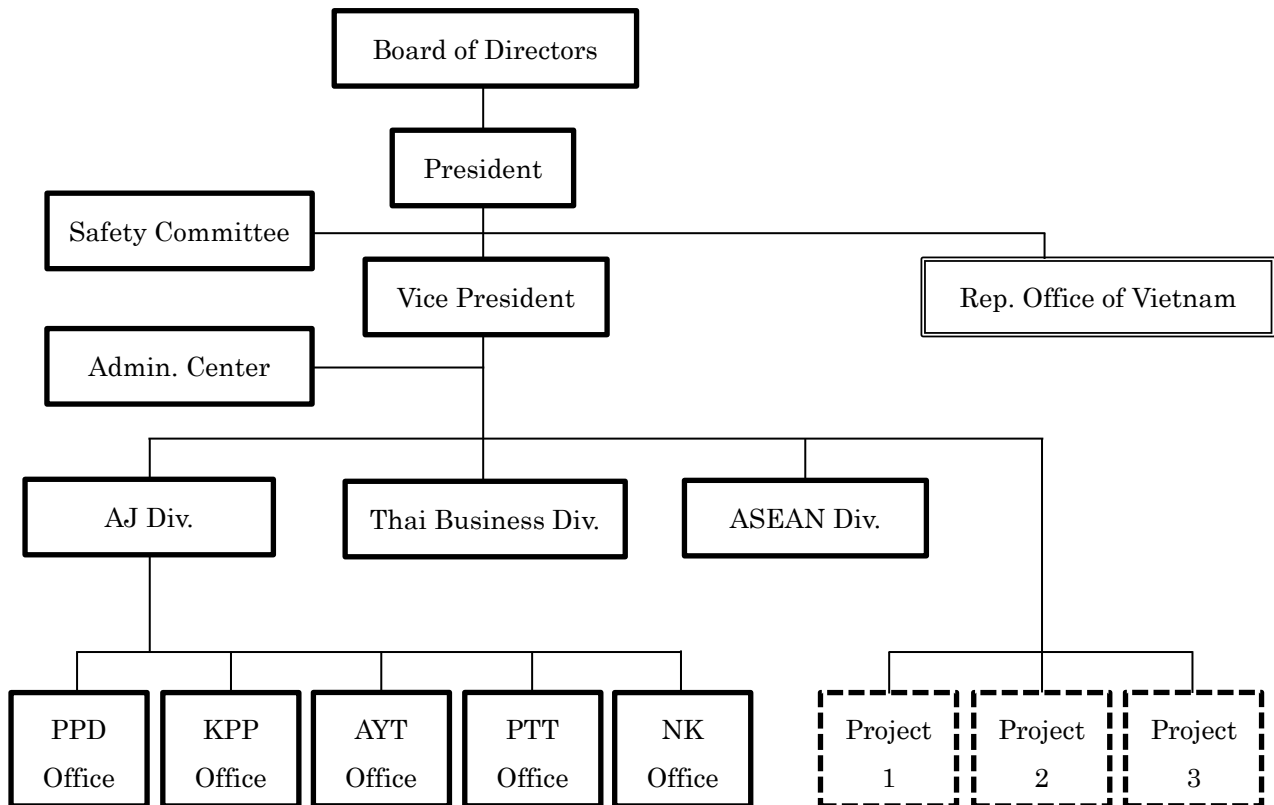
## ■ History

1987	Opened representative office in Bangkok
1992	Established LIFEC (THAILAND) Co., Ltd. in Bangkok
2001	Changed the name to AJINOMOTO ENGINEERING 2001 (THAILAND) Co., Ltd.
2006	Increased capital stock from 5 million THB to 20 million THB
2010	Opened representative office in Ho Chi Minh City, Vietnam

## ■ Affiliate

Ajinomoto Engineering Corporation  
TOKYU REIT Building 2nd Floor  
5-13-23 Kamata, Ota-ku  
Tokyo 144-0052, JAPAN  
Phone: +81-3-5480-5061 Fax: +81-3-5714-5441 (Mr. Yamaguchi, Marketing Dept.)  
URL: <http://www.ajieng.co.jp>

## ■ Organization



## ■ Our Projects

Project Ayutthaya New Factory of Ajinomoto Co., Thailand,  
Location Ayutthaya Province, Thailand  
Client Ajinomoto Co., (Thailand) Ltd.  
Completion March 2013

### AJEC(T)'s Services

Detailed design, Construction, Fabrication, procurement and installation of equipment, Electric and instrument, Commissioning and adjustment, Construction Management

### Overview

New construction of a factory to produce 60,000 tons/year of Ajinomoto® from molasses and tapioca by fermentation method.

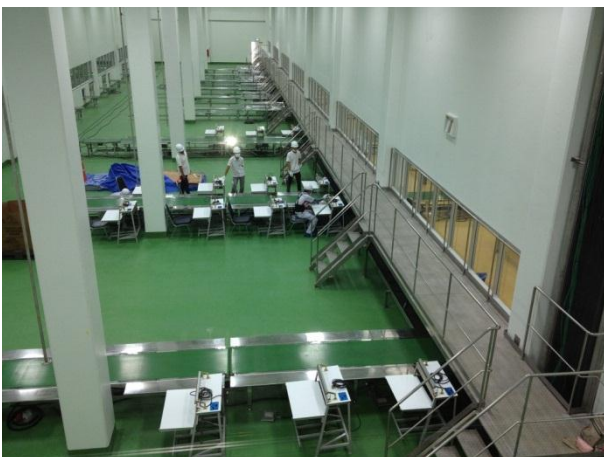
Total investment: THB 5,390 million (ca. USD 181.3 million\*)



Cover shot



Facilities under construction



Packing room



Yard rack



Project Reconstruction of production lines at Ayutthya Factory of Ajinomoto Frozen Foods (Thailand) Co., Ltd.

Location Ayutthaya Province, Thailand

Client Ajinomoto Frozen Foods (Thailand) Co., Ltd.

Completion November 2012

#### AJEC(T)'s Services

Removal of old facilities, Basic plan, Building renovation, Air-conditioning and ventilating system

Utility, Piping, Electric, Installation of equipment, Construction management, Safety management

#### Overview

Recovery and reconstruction of production lines after flood damage.

AFT has constructed a more compact, highly productive and profitable manufacturing system of two production lines by reducing the number of products from 23 to two: Tender Fried Chicken, a main product for the retail market in Japan, and Gyoza products for export to Europe and Asia. AFT also secured supply capacity and space for increasing production for future growth.

Production capacity: Approx. 7,000 tons/year

Buildings: Approx. 12,080 m<sup>2</sup>

Investment: THB 694 million (ca. USD 23.3 million\*)



Main gate



New factory



Freezer



Freezing machine room with cooling tower for air-conditioning

Project Floor repair work at a dried food manufacturing factory  
Location Ho Chi Minh City, Vietnam  
Client Japanese-affiliated dried food manufacturer  
Completion September 2012  
AJEC(T)'s Services  
Detailed design, Removal of old floor materials, Base coating, Final coating, Work management

#### Overview

Removal work of decrepit floor and coating work of new flooring at a dried vegetable manufacturing plant. The services included selecting heat resistant hygienic and durable floor materials and complete removal work of old flooring.



Final cleaning



New floor surface

Project Karawang New Factory of P.T. Ajinomoto Indonesia  
Location Karawang Industrial Estate, West Java, Indonesia  
Client P.T. Ajinomoto Indonesia  
Completion September 2012

**AJEC(T)'s Services**

Detailed design, Construction management, Fabrication and procurement of equipment, Management of piping work, Management of electric and instrument work

**Overview**

New factory construction to meet the rapid growth in demand of Masako® flavor seasoning. The new factory is positioned as a supply base for Western Indonesia and Islamic countries in the Middle East and North Africa. Together with the Mojokerto Factory, P.T. Ajinomoto will increase 50% over current production capacity.

Site Area: Approx.167,000 m<sup>2</sup>

Investment: IDR 382.3 billion (ca. USD 39.4 million\*)



Karawang New Factory



Site tour way for visitors



Packaging room

\* 1 THB = USD 0.03364, 100IDR = USD 0.0132 (As of 6 March 2013)



## ■ Construction Safety Management

We are implementing safety management of Japanese standards. For example, we conduct “Morning Talk (safety meeting)”, at each construction site every morning. We confirm and share work operations of each site at the meeting with all the workers. Also, every working team practices hazard prediction training.

All the parties concerned unite to work towards complete prevention of accidents and disasters.



Morning talk (left) and Hazard prediction training (right) at the construction site of Ayutthaya Project



Tool safety check (left) and Safety education (right) at the construction site of AFT Project



### **AJINOMOTO ENGINEERING 2001 (THAILAND) CO., LTD.**

7<sup>th</sup> Floor, Si Ayutthaya Bldg., 487/1 Si Ayutthaya Road  
Thanon Phayathai, Khet Ratchathewi, Bangkok 10400

Phone: +66-2-248-7221 / Fax: +66-2-248-7223

### **Representative office of Vietnam**

ITAXA Building Floor 9, 126 Nguyen Thi Minh Khai  
Ward 6, District 3, HCMC

Phone: +84-86-290-3500, 3503, 3363 / Fax: +84-86-290-3360